

Evaluation of a Real-Time Storm Surge Guidance Ensemble

R. Luettich (UNC-CH), J. Feyen (NOAA Storm Surge Roadmap, CSDL), J. Rhome (NWS/NCEP/NHC)

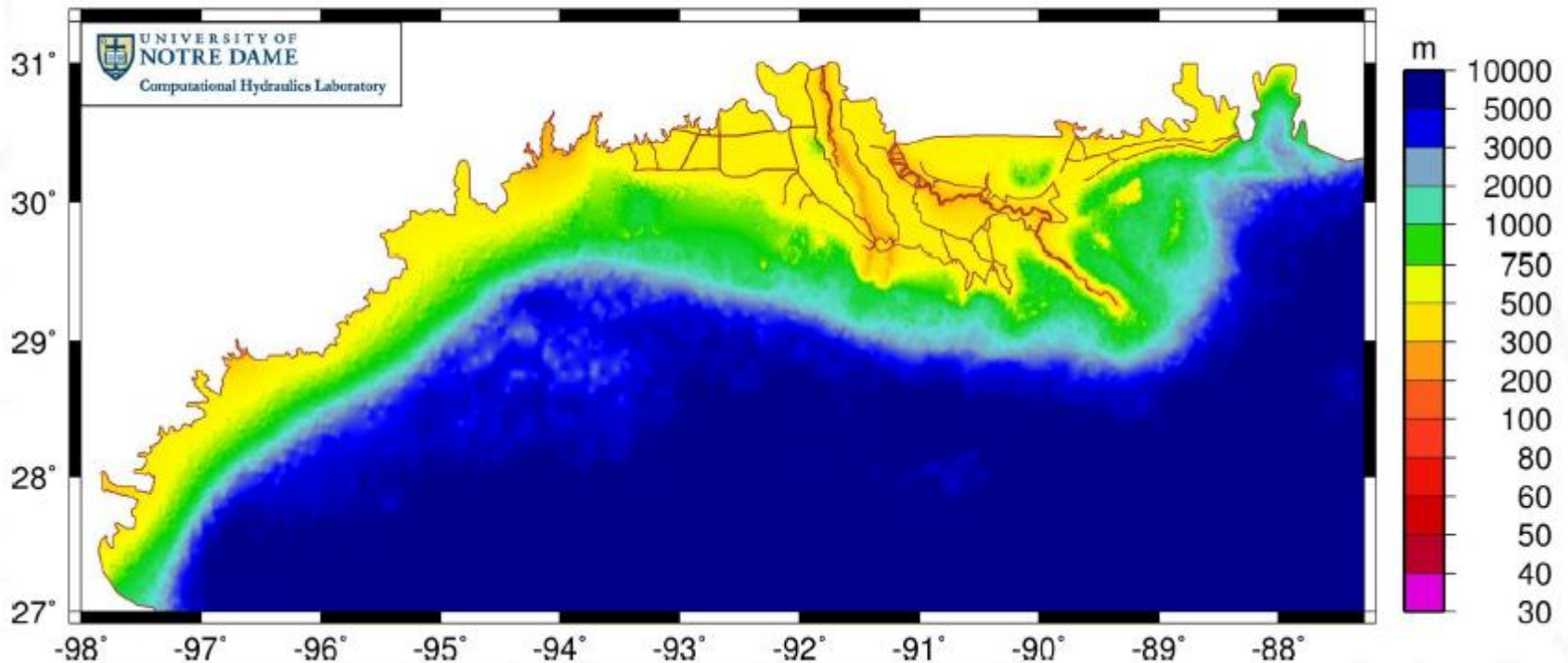
ADCIRC Surge Guidance System

- ADCIRC Surge Guidance System (ASGS) is a software system for generating storm surge, tide, and wave guidance from ADCIRC + SWAN in real time on high resolution grids
- Components have been in development over the last 5+ years via various projects for RENCI, USACE, DHS S&T, FEMA
- Demonstrated capability in ongoing IOOS Coastal Modeling Testbed

2012 Evaluation Plan

- Will evaluate real-time 4-5 member ensemble for use by operations
 - Parametric wind/pressure model driven by NHC Forecast Advisories
 - Initial coverage of Gulf of Mexico coastline
 - Coastal resolution of ~500 m
 - Estimated 2 hr run time on 2000 CPUs
 - Output will be accessible by NHC/SSU

Typical Grid Resolution



- From Westerink et al., 2012 AMS Conference session on IOOS Coastal Modeling Testbed